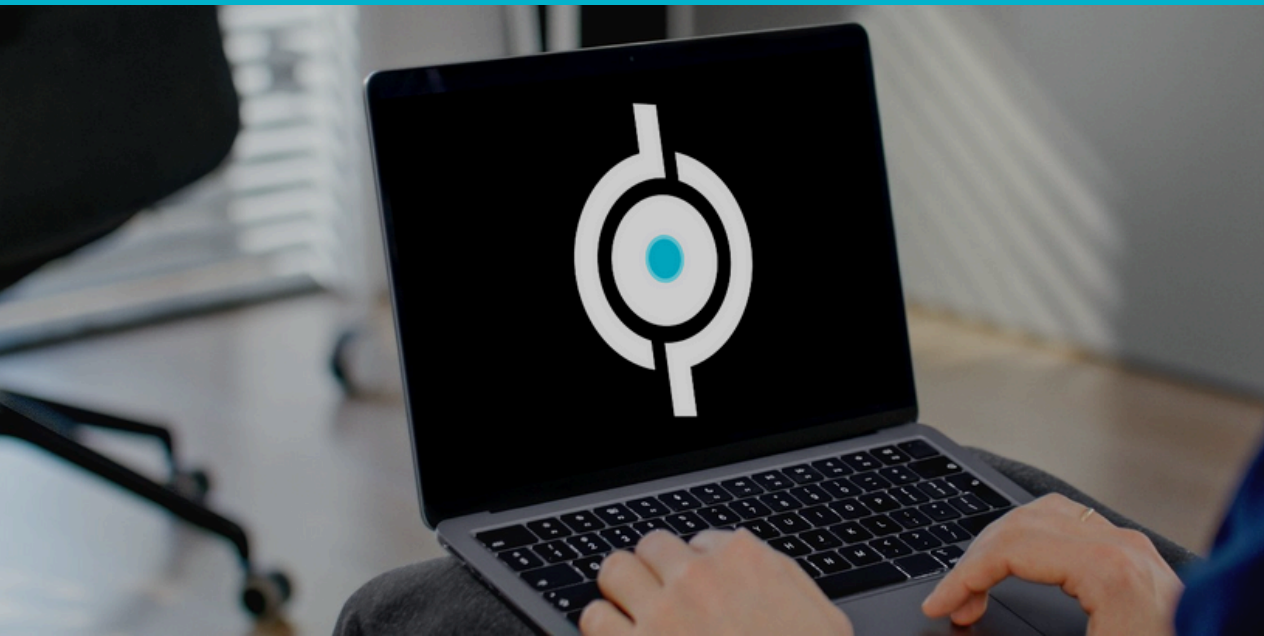


# The new DopX Trio is here!

Efficiency meets simplicity - This makes robot programming fun!



Program Editor



Program Viewer



Just get started right away!

With the program editor, you're ready to go! The editor opens in seconds, and you can make changes right away!  
No process simulation necessary - without any technical barriers.  
Intuitive interface - focused on the essentials.  
Efficiency meets simplicity - with the Program Editor you can take your automation to the highest level!

Inside the Robot Program!

With the Program Viewer, you can see robot programs in their native language - as if you were standing right next to the Teachpendant!  
Familiar syntax, familiar environment - the programs appear exactly as you know them from the robot.  
This lowers the barrier to entry and increases efficiency!

Your shortcut to the application!

The new Brush Editor provides direct access to application controls.  
New material batch? No problem!  
Simply adjust the desired parameter and distribute it to all robots with just one click! Every adjustment is fully automatically logged and stored in the change log - for maximum transparency and traceability.

trust - stable - hands-on

We have implemented our customers' wishes: With the new **Program Editor**, DopX is entering a new era! Complemented by the **Program Viewer** and the **Brush Editor**, they form a powerful trio for fast and secure access to robots in production.

direct - intuitive - without production downtime

The interface remains streamlined and clear, providing DopX with support exactly where it matters:

on the line - in real time - on the robot

## Advantages

### Program Editor

No PS installation required - program optimizations can be implemented directly

### Program Viewer

familiar syntax, programs are presented in native robot language

### Brush Editor

direct access to application control, including automatic logging

### DopX - Trio

brings control directly to where it is needed - into the production flow!